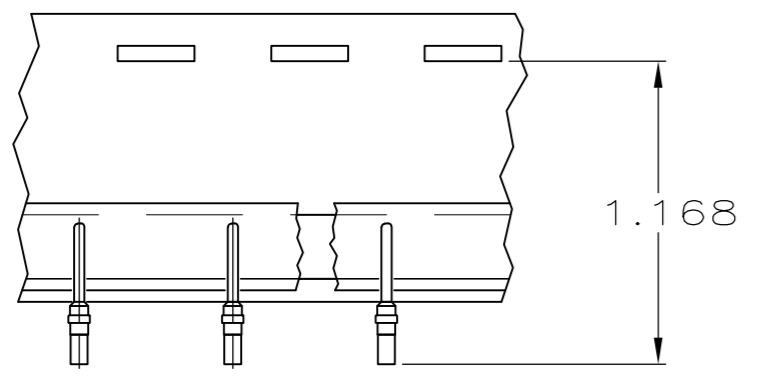
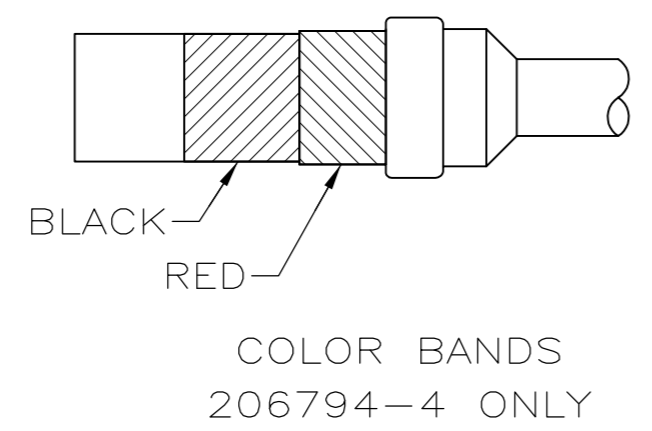
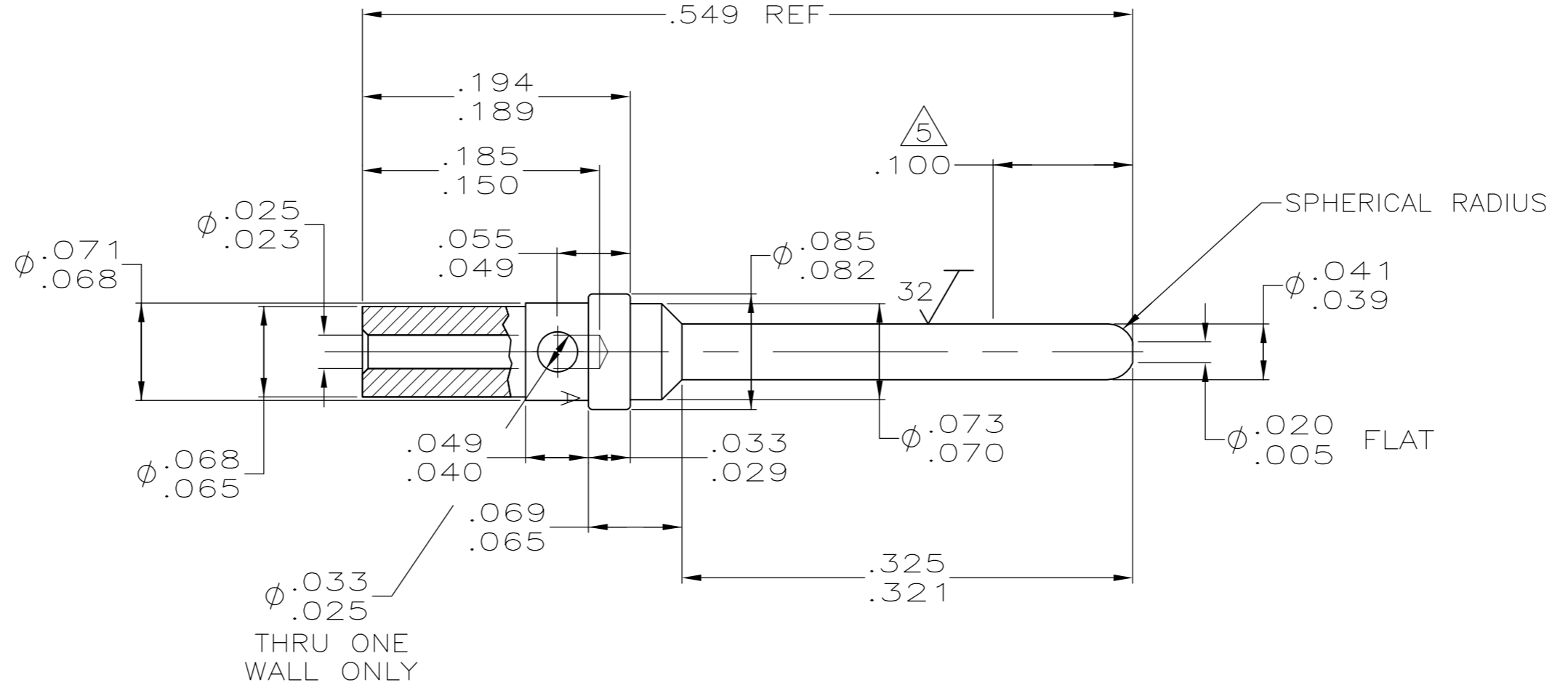


THIS DRAWING IS UNPUBLISHED. RELEASED FOR PUBLICATION  
 © COPYRIGHT - By - ALL RIGHTS RESERVED.

LOC		DIST		REVISIONS			
P	LTR	DESCRIPTION		DATE	DWN	APVD	
	G1	REVISED PER ECO-11-005030		11MAR11	RK	HMR	

1. ALL DIMENSIONS APPLY AFTER PLATING.
  2. THIS PART COMPLIES WITH SPEC. MIL-C-24308/11, EXCEPT WIRE BARREL.
  3. ALL DIAMETERS CONCENTRIC WITH EACH OTHER WITHIN .004 T.I.R.
  4. ALL SURFACES HAVE  $\sqrt{63}$  FINISH OR BETTER UNLESS OTHERWISE NOTED.
- $\triangle 5$  POINT OF PLATING MEASUREMENT.  
 $\triangle 6$  FINISH: PLATED GOLD PER MIL-G-45204 OVER COPPER PER MIL-C-14550.



TAPE MOUNTED  
 206794-3 ONLY  
 SCALE: NTS

SUPERSEDED BY 206794-3	TAPE MOUNTED	-	206794-4	206794-5
	COLOR CODED	-	206794-2	206794-4
	TAPE MOUNTED	-	206794-2	206794-3
	AS SHOWN	$\triangle 6$	COPPER ALLOY #187	206794-2
REMARKS	FINISH	MATERIAL	PART NUMBER	

THIS DRAWING IS A CONTROLLED DOCUMENT.		DWN	C.C.THOMAS	7/24/00	<b>TE</b> TE Connectivity
DIMENSIONS: INCHES		CHK	R.GROSS	9-5-00	
TOLERANCES UNLESS OTHERWISE SPECIFIED:		APVD	R.GROSS	9-5-00	
0 PLC ± - 1 PLC ± - 2 PLC ± - 3 PLC ± .025 4 PLC ± - ANGLES ± 2° FINISH SEE TABLE		NAME	PIN CONTACT, SIZE 20 (FOR #26 & #28 AWG WIRE)		
MATERIAL	COPPER ALLOY NO. 187	WEIGHT	-	SIZE	A2
CAGE CODE		DRAWING NO	RESTRICTED TO		-
CUSTOMER DRAWING		SCALE	10:1	SHEET	1 of 1
REV		G1			