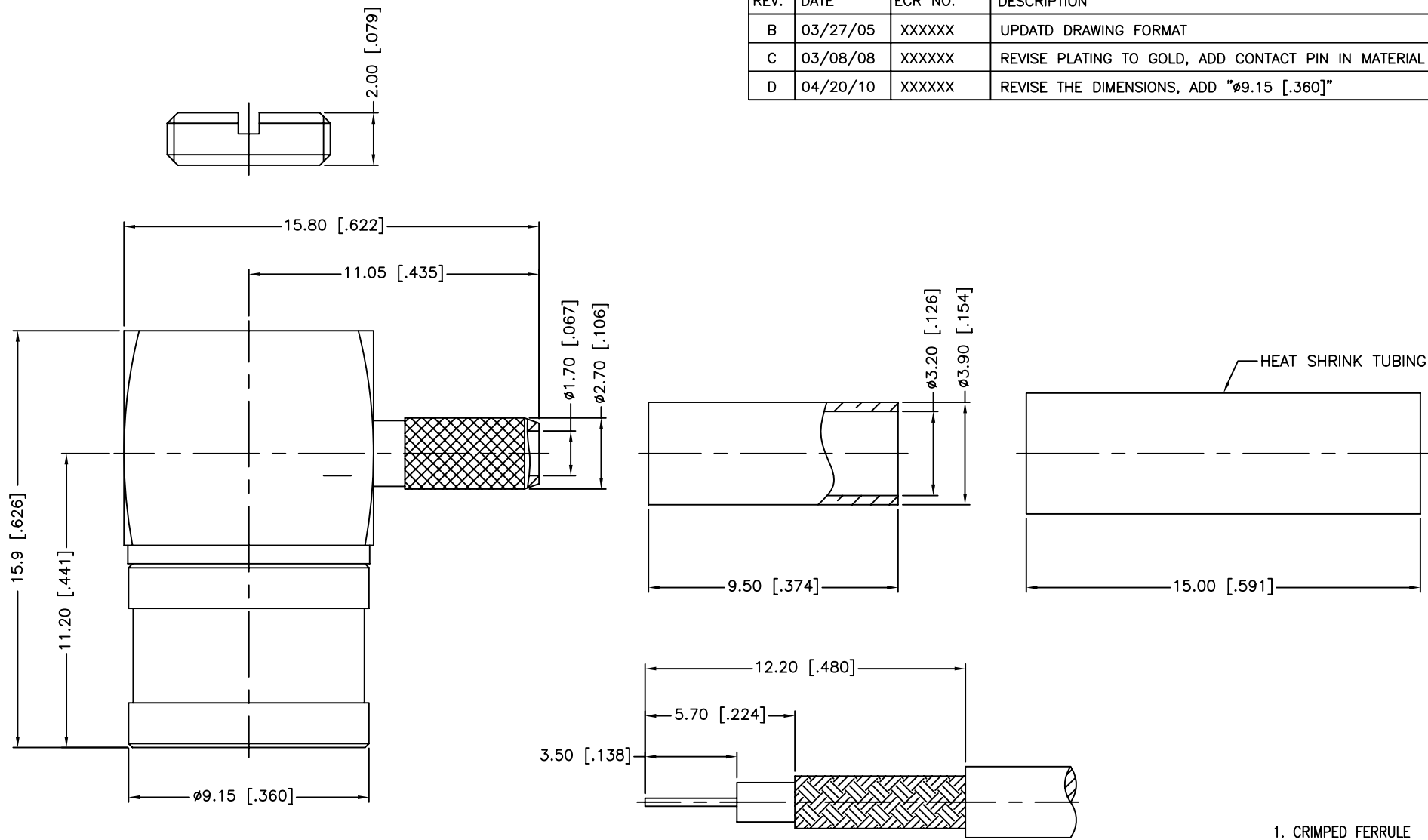


REV.	DATE	ECR NO.	DESCRIPTION
B	03/27/05	XXXXXX	UPDATD DRAWING FORMAT
C	03/08/08	XXXXXX	REVISE PLATING TO GOLD, ADD CONTACT PIN IN MATERIAL CALLOUT
D	04/20/10	XXXXXX	REVISE THE DIMENSIONS, ADD "ø9.15 [.360]"



RECOMMENDED
CABLE STRIPPING DIM'S

1. CRIMPED FERRULE
HEX CRIMP SIZE .128"
2. CONTACT PIN TO SOLDER

DESCRIPTION	MATERIAL	FINISH	QTY	DO NOT SCALE DRAWING	APPROVALS	DATE	Amphenol Connex							
9	HEAT SHRINK TUBING		BLACK	1			PART DESCRIPTION SMB R/A CRIMP PLUG (FOR RG-179/U, 187A/U - 75 OHM)							
8	FERRULE	BRASS	GOLD	1	DRAWN	M.ZHANG				04/20/10				
7	NUT	BRASS	GOLD	1	CHECKED									
6	RETAINER RING	BURYLLIUM COPPER	NATURAL	1	ISSUED									
5	CONTACT PIN	BURYLLIUM COPPER	GOLD	1	SHEET	1 OF 1								
4	INSULATOR	PTFE	NATURAL	1										
3	BARREL	BRASS	GOLD	1										
2	BODY	BRASS	GOLD	1										
1	SHELL	BRASS	GOLD	1										
					CAD FILE	C:/CONNEX/142115.DWG	DWG. NO.	142115.DWG	REV.	D	SIZE	A	SCALE	NA

UNLESS OTHERWISE SPECIFIED DIMENSIONS ARE IN MILLIMETERS. DIMENSIONS IN [] ARE IN INCHES AND FOR CUSTOMER REFERENCE ONLY.

UNLESS OTHERWISE SPECIFIED TOLERANCES FOR MILLIMETERS ARE:
0.5 - 8mm ± 0.20mm
8 - 30mm ± 0.40mm
30 - 120mm ± 0.50mm

UNLESS OTHERWISE SPECIFIED TOLERANCES FOR INCHES ARE:
.020 - .315 ± 0.007"
.315 - 1.180 ± 0.015"
1.180 - 4.724 ± 0.020"