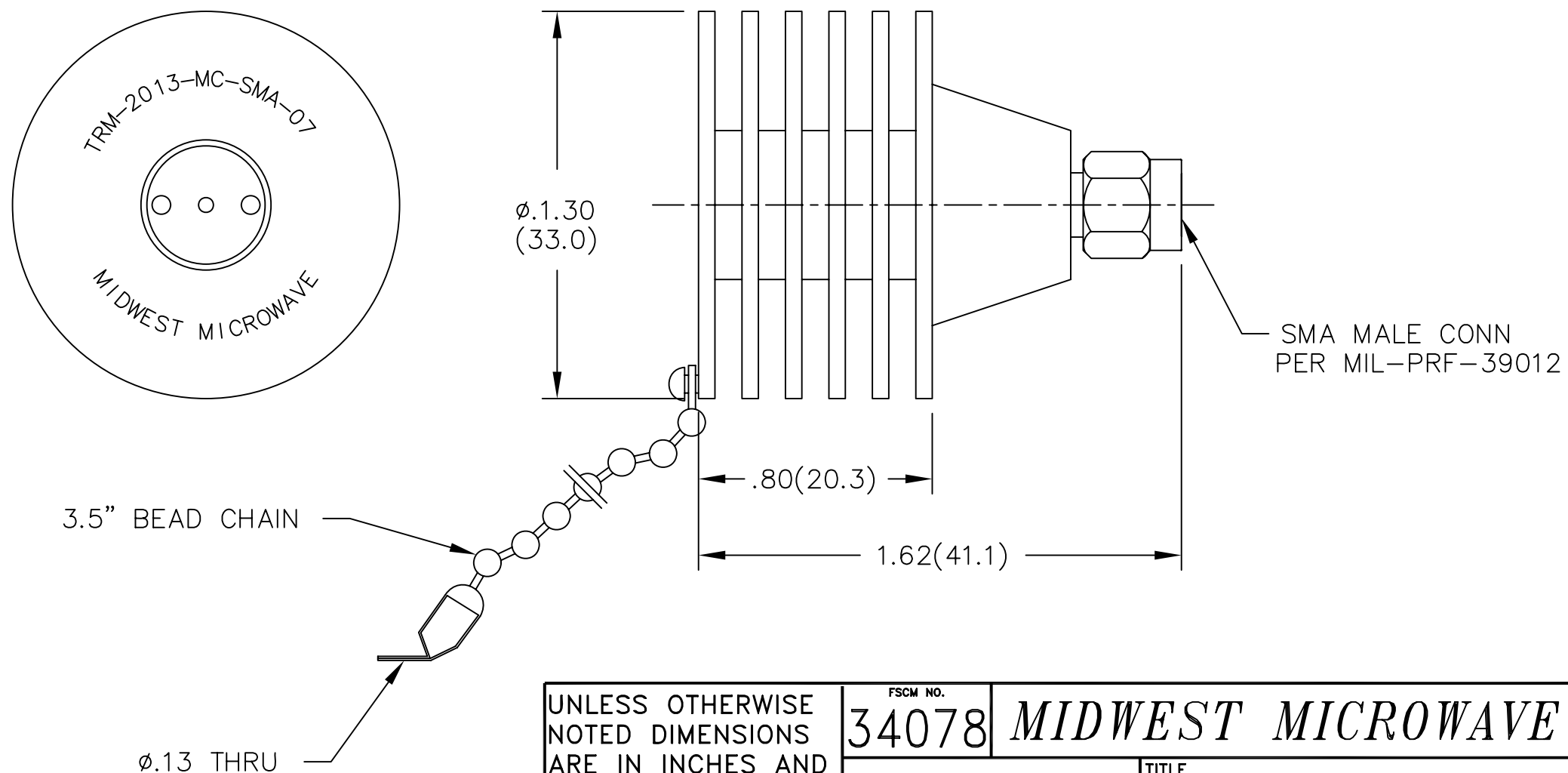


NOTES:

- 1.0 ELECTRICAL SPECIFICATIONS:
  - 1.1 FREQUENCY RANGE: DC to 18.0 GHz
  - 1.2 MAXIMUM INPUT POWER: 10 WATTS AVG. AT +40°C DERATED LINEARLY TO 1 WATT AT +215°C
  - 1.3 OPERATING TEMP. RANGE: -55°C to +125°C
  - 1.4 IMPEDANCE: 50 OHMS
  - 1.5 MAXIMUM VSWR: 1.05 +0.01f(GHz)

2.0 MARKING: MARK UNIT AS SHOWN.  
(REF.: INK-01526-27-06)

3.0 DIMENSIONS IN PARENTHESIS ARE  
IN MILLIMETERS.



REV.	DESCRIPTION	DATE
-	RELEASED	3/25/92
A	ECN 15506	9/23/96
A1	ADDED TITLEBLOCK	10/26/05

UNLESS OTHERWISE NOTED DIMENSIONS ARE IN INCHES AND TOLERANCES ARE:		FSCM NO. <b>34078</b>		<b>MIDWEST MICROWAVE</b>	
3 PLACE DECIMALS ±.005		NOTICE: The information contained in this drawing is proprietary and must not be used without the permission of Midwest Microwave		TITLE TERMINATION	
2 PLACE DECIMALS ±.02					
FRACTIONS ±1/64					
PARALLELITY: T.I.R. _____					
FLATNESS: T.I.R. _____		DRAWN/DATE A.BEATTY 3/17/92	ENG./DATE G.KOZAK 3/25/92	DRAWING NUMBER TRM-2013-MC-SMA-07	
CONCENTRICITY: T.I.R. _____		CHECKED/DATE	APPROVED/DATE	SCALE: 2=1	
ANGLES AND PERPENDICULARITY: ±1'				SHEET 1 of 1	