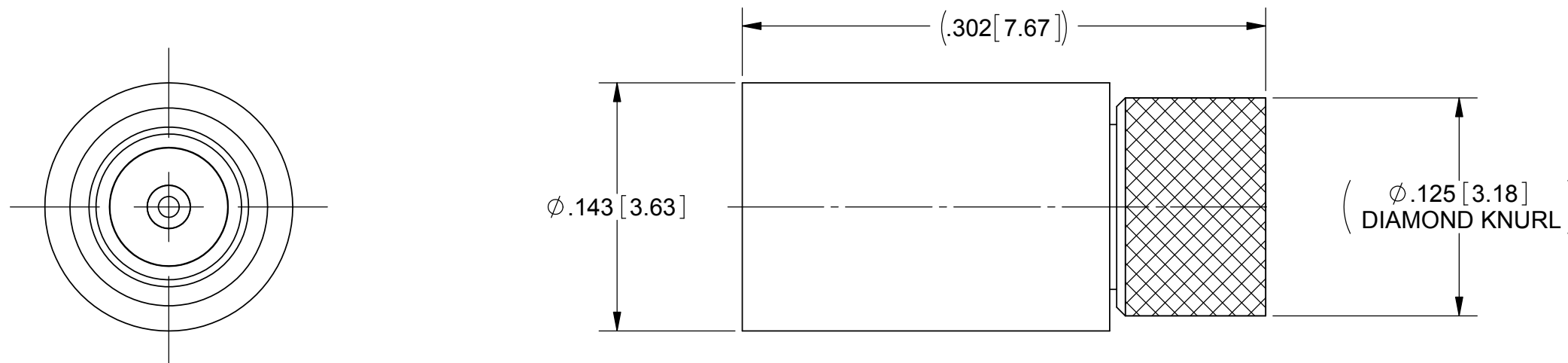


# PRODUCT DATA DRAWING

| REVISION HISTORY |                |          |          |
|------------------|----------------|----------|----------|
| REV              | DESCRIPTION    | DATE     | APPROVED |
| -                | DCN 36040      | 09/08    | STW      |
| A                | REV. DCN 41342 | 05/19/15 | STW      |



**MATERIAL:**

- MATING BODY: STAINLESS STEEL PER AMS-5640, ALLOY UNS S30300, TYPE 1
- CONTACT: BERYLLIUM COPPER PER ASTM B196, ALLOY No. UNS C17300, TD04
- REAR BODY: BRASS PER ASTM B16, ALLOY UNS No. C36000
- INSULATORS: PTFE PER ASTM D1710, TYPE I, GRADE 1, CLASS B
- RESISTOR ELEMENT: ALUMINA SUBSTRATE WITH NICHROME RESISTOR

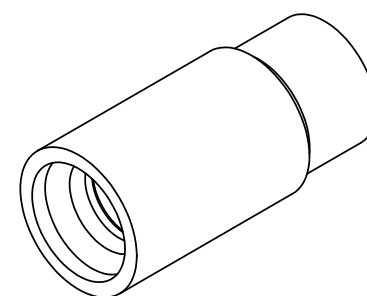
**FINISH:**

- REAR BODY & CONTACT: GOLD PER ASTM B488, TYPE II, CODE C, CLASS 1.27; OVER NICKEL PER AMS-QQ-N-290, CLASS 1, .00005" MIN.

- MATING BODY: PASSIVATED PER AMS-2700, TYPE 2

**PERFORMANCE:**

- IMPEDANCE: 50 OHMS
- FREQ. RANGE: DC TO 40.0 GHz
- VSWR: 1.20:1 DC TO 18.0 GHz  
1.30:1 18.0 GHz TO 40.0 GHz



| SV P/N    | INTERFACE |
|-----------|-----------|
| 8032-6001 | FD        |
| 8032-6002 | SB        |

|  |  |  |  |                           |
|--|--|--|--|---------------------------|
| MATERIAL: SEE NOTES  | DIMENSIONS ARE IN INCHES TOLERANCES:<br>FRACTIONAL: ±1/64 ANGULAR: X° ±1'0"<br>X'X' ±15' | UNLESS OTHERWISE SPECIFIED<br>1) ALL DIMENSIONS ARE IN INCHES (MILLIMETERS)<br>2) ALL DIMENSIONS ARE AFTER PLATING.<br>3) BREAK CORNERS & EDGES .005 R. MAX.<br>4) CHAM. 1ST & LAST THREADS.<br>5) SURFACE ROUGHNESS 63-MIL-STD-10.<br>6) DIA. 'S ON COMMON CENTERS TO BE CONCENTRIC WITHIN .005 T.I.R.<br>7) REMOVE ALL BURRS | <b>SV Microwave, Inc.</b><br>2400 Centrepark West Drive, Suite 100<br>West Palm Beach, FL 33409<br>TITLE: <b>SMPM MALE 1/2 W TERMINATION</b> |                           |
| FINISH: SEE NOTES  | DECIMAL: X ±.030<br>.XX ±.010<br>.XXX ±.005  |  |  |                           |
| SURFACE AREA: N/A  | INTERPRET DIMENSIONS AND TOLERANCES PER ASME Y14.5M - 1994                               |  | DRAWN: DAL 09/03/08  |                           |
| <b>PROPRIETARY</b><br>THE INFORMATION CONTAINED IN THIS DRAWING IS THE SOLE PROPERTY OF SV MICROWAVE, INC. ANY REPRODUCTION IN PART OR AS A WHOLE WITHOUT THE WRITTEN PERMISSION OF SV MICROWAVE, INC IS PROHIBITED. | THIRD ANGLE PROJECTION   |  | CHECKED: STW 09/03/08  |                           |
|  |  |  | APPROVED: STW 09/03/08   |                           |
|  |  |  | SCALE: 12:1  | DWG. NO. <b>8032-600X</b> |
|  |  |  | SIZE <b>B</b> CAGE CODE <b>95077</b>   | SHEET 1 OF 1              |