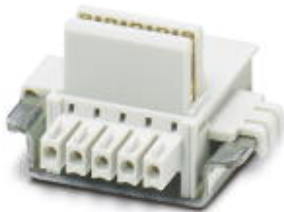


Electronic housing - ME 22,5 TBUS 1,5/4P1S KMGY - 2201732

Please be informed that the data shown in this PDF Document is generated from our Online Catalog. Please find the complete data in the user's documentation. Our General Terms of Use for Downloads are valid (<http://phoenixcontact.com/download>)



DIN rail connector for ME and ME-MAX, design width: 22.5 mm, 4 parallel positions and 1 serial position, color: light gray (similar to RAL 7035)

Product Features



Key commercial data

| | |
|----------------------|----------|
| Packing unit | 1 pc |
| Custom tariff number | 85366990 |
| Country of origin | Germany |

Technical data

Technical data

| | |
|---|------------|
| Number of positions | 5 |
| Current | 8 A |
| Voltage | 50 V DC |
| Housing material | Polyamide |
| Inflammability class according to UL 94 | V0 |
| Color | light gray |

Classifications

eCl@ss

| | |
|------------|----------|
| eCl@ss 5.0 | 27180506 |
| eCl@ss 5.1 | 27180506 |
| eCl@ss 6.0 | 27180802 |
| eCl@ss 7.0 | 27182702 |
| eCl@ss 8.0 | 27182702 |

Electronic housing - ME 22,5 TBUS 1,5/4P1S KMGY - 2201732

Classifications

ETIM

| | |
|----------|----------|
| ETIM 4.0 | EC001031 |
| ETIM 5.0 | EC001031 |